

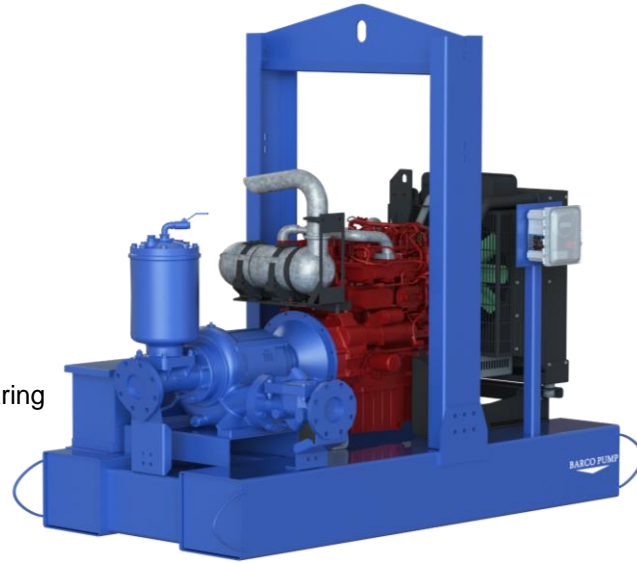
BARCO PUMP

BPG4410D

4" X 4"

PUMP SPECIFICATIONS

- Manufacturer:** Gorman Rupp
- Size:** 4"x4", 150# Flanges
- Type:** Priming assisted Centrifugal pump
- Volute:** Gray Iron 30.
- Impeller:** 2 vane, Semi-open
- Solids:** 3" diameter solids
- Impeller Shaft:** Stainless steel 17-4PH
- Seal:** Mechanical, silicon carbide
- Wear plate:** Carbon Steel 1015
- Bearings:** Single ball radial and double ball thrust bearing
- Hardware:** Standard plated steel



**Shown with options

ENGINE SPECIFICATIONS

- Manufacturer:** Deutz
- Type:** 4 Cylinder, Diesel Engine
- Cooling:** Liquid cooled
- Performance:** 74 HP @ 2400RPM
- Displacement:** 3.6 liters or 219.685in³
- Starter:** 12V Electric
- Fuel Tank:** 100 U.S. Gallons;
- Full Load Operating Time:** 48 hours

FEATURES:

- Standard Equipment:** 4" Swing Check Valve, Battery, Exhaust Rain Cap, Lockable Fuel Cap, Automatic liquid level Control.
- Optional Equipment:** DOT Trailer Kit, Butterfly Valves, Pressure Gauge, Suction Float Assembly Multiple Fitting Options - Please Ask Your Representative

