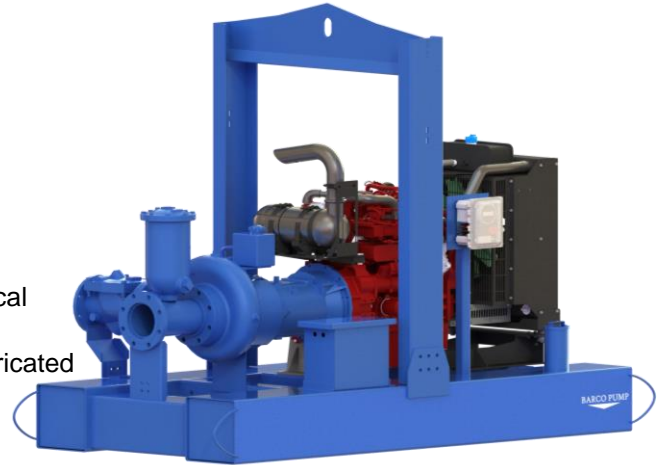


PUMP SPECIFICATIONS

Manufacturer: Cornell
Size: 6"x6", 150# Flanges
Type: Centrifugal
Casing: Cast Iron
Impeller: Enclosed, 2 vane, Cast Iron ASTM A48
Solids: 3" Spherical
Impeller Shaft: 1144 Stress Proof Steel
Seal: Tungsten carbide vs. silicon carbide, mechanical
Wear Ring: Cast Iron ASTM A48
Bearings: Heavy duty deep ball bearing, grease lubricated
Hardware: Stainless steel.



ENGINE SPECIFICATIONS

Manufacturer: Deutz
Type: 4 Cylinder, Turbo Charged Diesel Engine
Cooling: Liquid Cooled
Performance: 74 HP @ 2300 RPM
Displacement: 3.6 liters or 219.685in³
Starter: 12V Electric
Fuel Tank: 130 U.S. Gallons;
Full Load Operating Time: 35 hours

**Shown with options

FEATURES:

Standard Equipment: 6" Swing Check Valve, DOT bumper pull Trailer Kit
 Battery, Exhaust Rain Cap, Lockable Fuel Cap, Automatic liquid level Control.
Optional Equipment: Butterfly Valves, Pressure Gauge, Suction Float Assembly,
 Multiple Fitting Options - Please Ask Your Representative

