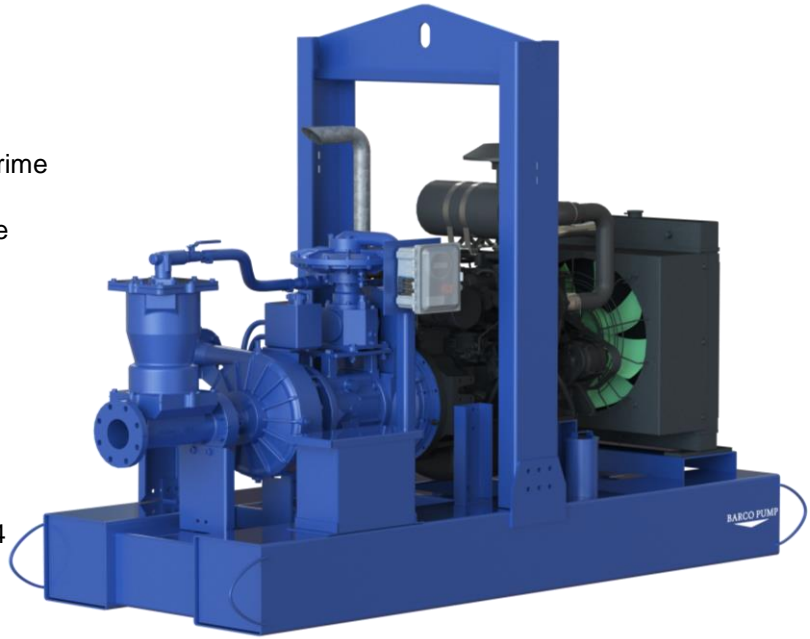


PUMP SPECIFICATIONS

Manufacturer: Cornell Pump
Size: 4" x 2.5" NPT - Female
Type: Centrifugal clear liquid pump, Redi prime
Casing: Cast Iron ASTM A48 CL30
Impeller: ASTM A48 CL30, 14 in dia, 7 vane
Solids: 0.41"
Impeller Shaft: Carbon Steel
Seal: Mechanical type 1 seal
Wear Rings: Cast Iron ASTM A48 C130
Bearings: Ball bearings
Hardware: Standard Plated Steel

ENGINE SPECIFICATIONS

Manufacturer: Isuzu 4JJITABW Final Tier4
Type: 4 Cylinder, Diesel Engine
Cooling: Liquid
Performance: 70HP @ 2000 RPM
Displacement: 183 Cu. In. (3.0L)
Starter: 12V Electric
Fuel Tank: 100 gallons
Full Load Operating Time: 37 HOURS



**Shown with options

FEATURES:

Standard Equipment: Lifting Bale, Battery, Enclosed Battery Box
 Exhaust Rain Cap, Lockable Fuel Cap, Murphy Engine Controls
Optional Equipment: Wheel Kit, USDOT Trailer Kit, Hardened Wear Parts
 Automatic Liquid Level Control, Custom Color Scheme
 Multiple Fitting Options - Please Ask Your Representative

