

ACDEU

Sound Attenuated Environmental Silent Pump Self Priming Centrifugal Pump



Diesel Engine Driven
Model T6A60S-4045D-ESP
Size 6" x 6"



Total Head		Capacity of Pump in U.S. Gallons per Minute (GPM) at Continuous Performance			
P.S.I.	Feet	25'	20'	15'	10'
56.4	130	560	560	560	560
52.0	120	730	760	760	760
43.3	100	750	1050	1170	1170
34.7	80	760	1060	1290	1460
26.0	60	770	1070	1300	1500
17.3	40	780	1080	1310	1510
Suction Lift		25'	20'	15'	10'



PUMP SPECIFICATIONS

Size: 6" x 6" (152 mm x 152 mm) NPT Male, ^{w/}Victaulic® Nipples.
Casing: Gray Iron No. 30. Maximum Operating Pressure 88 psi (607 kPa)*.
Open Type, Two Vane Impeller: Ductile Iron No. 65-45-12. Handles 3" (76.2 mm) Diameter Spherical Solids.
Impeller Shaft: Stainless Steel No. 17-4 PH.
Replaceable Wear Plate: Steel No. 1015.
Removable Adjustable Cover Plate: Gray Iron No. 30; 50 lbs. (23 kg).
Flap Valve: Neoprene ^{w/}Steel Reinforcing.
Intermediate: Gray Iron No. 30.
Drive Flange: Gray Iron No. 30.
Seal Plate: Gray Iron No. 30.
Shaft Sleeve: Alloy Steel No. 4130.
Seal: Cartridge Type Mechanical, Oil-Lubricated, Double Floating, Self-Aligning. Silicon Carbide Rotating and Stationary Faces. Stainless Steel No. 316 Stationary Seat. Fluorocarbon Elastomers (DuPont Viton® or Equivalent). Stainless Steel No. 18-8 Cage and Spring. Maximum Temperature of Liquid Pumped 160°F (71°C)*.
Radial Bearing: Open Single Ball.
Thrust Bearing: Open Double Ball.
Bearing and Seal Cavity Lubrication: SAE No. 30 Non-Detergent Oil.
Flanges: 125# Gray Iron No. 30.
Gaskets: Buna-N, Compressed Synthetic Fibers, PTFE, Vegetable Fiber, Cork, and Rubber.
O-Rings: Buna-N.
Hardware: Standard Plated Steel.
Brass Pressure Relief Valve.
Bearing and Seal Cavity Oil Level Sight Gauges.
Standard Equipment: Soundproof (EPA Average 67 dBA at 23 feet [7 meters] Under Load). Lightweight Aluminum Enclosure - Removable for Maintenance of Pump or Engine - ^{w/}Padlockable Door Panels. Spill Containment Base ^{w/}Integral Drains and Fork Lift Pockets. 90° Discharge Elbow. Strainer. Single Level Actuated (Microswitch) Type Liquid Level Control System with 50 Ft. (15,2 M) of Cable (Double Float System and Alternate Cable Lengths Available; Consult the Factory).
Optional Equipment: Battery. Automatic Air Release Valve with Check Valve. Suction Vacuum and Discharge Pressure Gauge Kit. G-R Hard Iron Impeller, Seal Plate and Wear Plate. Over-the-Road Trailer (Meets D.O.T. Requirements) ^{w/}Electric Brakes (Hydraulic Surge Brakes Optional), Running Lights, Two Trailer Jack Stands and Safety Chains. Submersible Transducer and Electronic Pressure Switch (EPS) Control ^{w/}Start/Stop Setpoint Adjustments.

* Consult Factory for Applications Exceeding Maximum Pressure and/or Temperature Indicated.

Victaulic is a Registered Trademark of Victaulic Company of America.

WARNING!

Do not use in explosive atmosphere or for pumping volatile flammable liquids.

ENGINE SPECIFICATIONS

Model: John Deere 4045D "Power Tech."
Type: Four Cylinder, Four Cycle, Liquid Cooled Diesel Engine.
Displacement: 276 Cu. In. (4,5 Liters).
Governor: Mechanical.
Lubrication: Forced Circulation.
Air Cleaner: Dry Type.
Oil Reservoir: 9 U.S. Qts. (8,5 Liters) Dry; 8 U.S. Qts. (7,5 Liters) Refill.
Fuel Tank: 84 U.S. Gallons (318 Liters).
Full Load Operating Time: 31.7 Hrs.
Starter: 12V Electric.

Standard Features: Electronic Autostart Control Panel ^{w/}LCD Backlit Display, Low Oil Pressure, High Coolant Temperature and Engine Over-Crank Safety Shut Down Switches/Indicators, Tachometer, Hourmeter, Voltmeter, Coolant Temperature Gauge, Oil Pressure Gauge, On/Off Key Switch, Throttle Control. Exhaust Silencer ^{w/}Blanket and Weather Cap.

JOHN DEERE PUBLISHED PERFORMANCE:

Maximum Continuous BHP 72 (54kW) @ 2500 RPM
 Maximum Dynamic BHP 80 (60 kW) @ 2500 RPM



THE GORMAN-RUPP COMPANY • MANSFIELD, OHIO

www.gormanrupp.com
 GORMAN-RUPP OF CANADA LIMITED • ST. THOMAS, ONTARIO, CANADA
 Specifications Subject to Change Without Notice

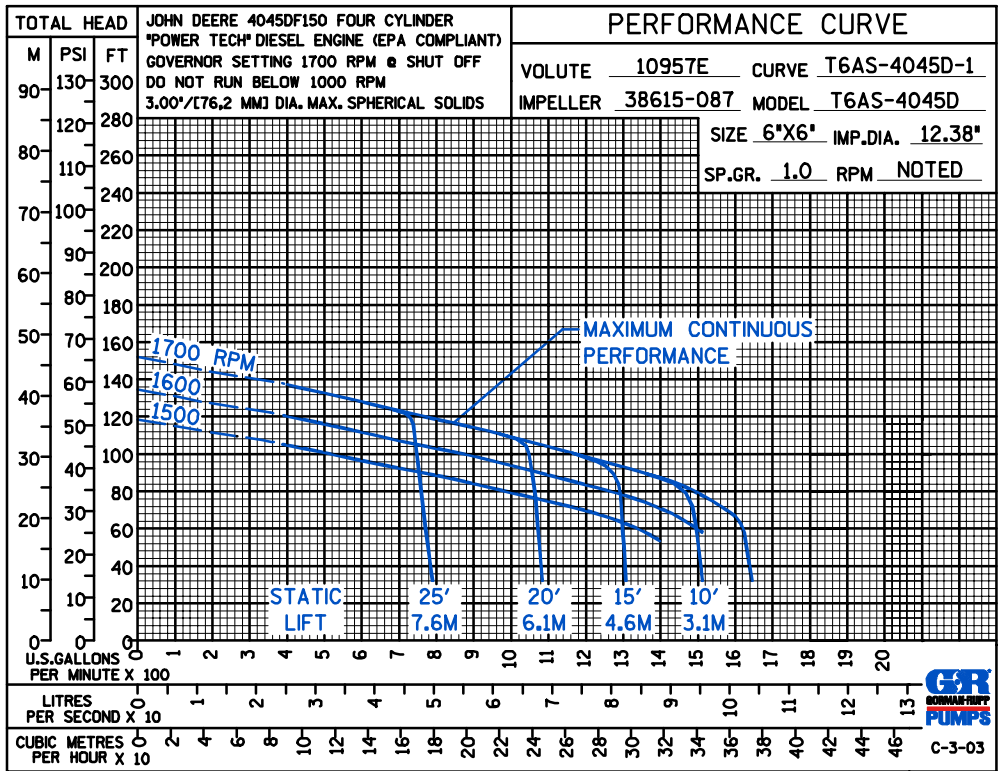
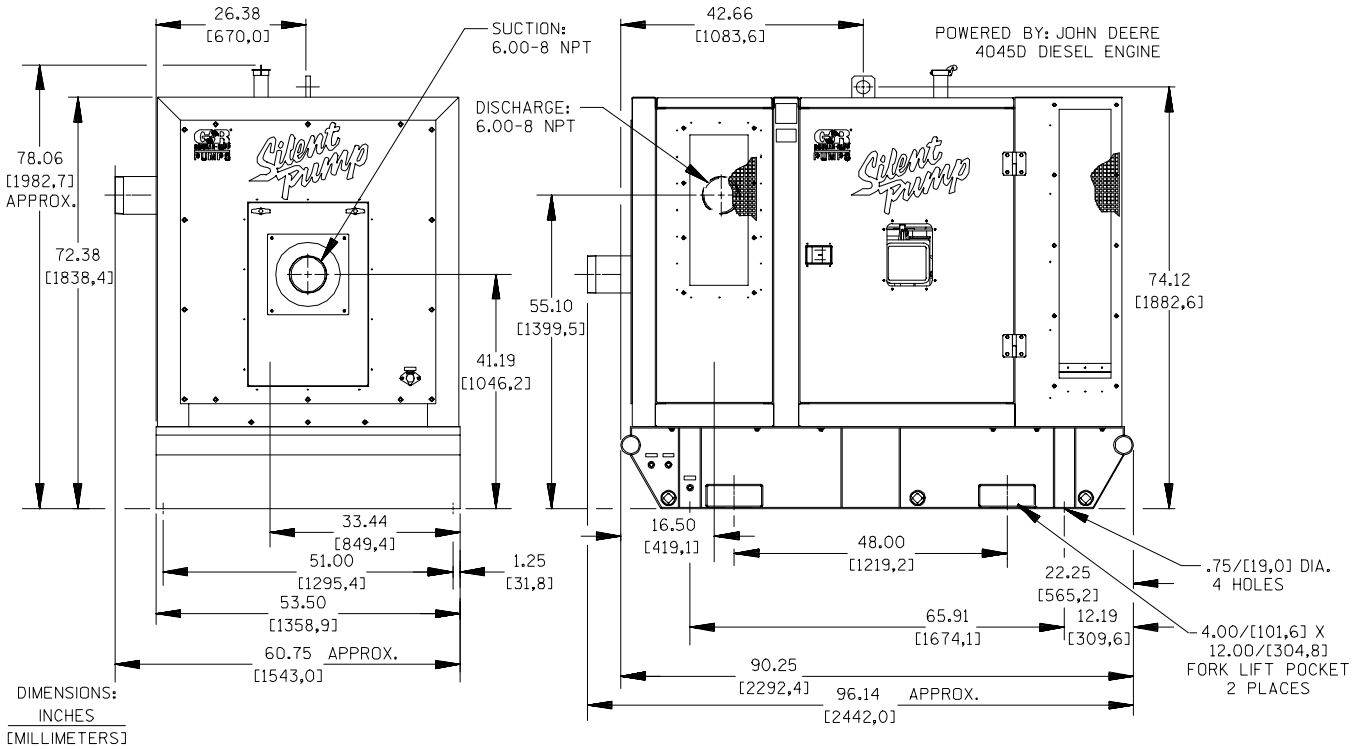
Printed in U.S.A.

Specification Data

SECTION 45, PAGE 1565

APPROXIMATE DIMENSIONS and WEIGHTS

	SKID BASE	HIGHWAY TRAILER
NET WEIGHT:	4470 LBS. (2028 KG.)	6145 LBS. (2787 KG.)
SHIPPING WEIGHT:	4700 LBS. (2132 KG.)	6145 LBS. (2787 KG.)
EXPORT CRATE SIZE:	397 CU. FT. (11.2 CU. M.)	1020 CU. FT. (28,9 CU. M.)



THE GORMAN-RUPP COMPANY • MANSFIELD, OHIO

GORMAN-RUPP OF CANADA LIMITED • ST. THOMAS, ONTARIO, CANADA

Specifications Subject to Change Without Notice

Printed in U.S.A.