

ACDEU



VARIOUS PATENTS APPLY

Priming Assisted Centrifugal Enclosed Silent Pump w/Autostart Model PA4A60C-4024T-ESP

Size 4" x 4"



Total Head		Capacity of Pump in U.S. Gallons per Minute (GPM) at Continuous Performance			
P.S.I.	Feet				
52.9	122	180	180	180	180
52.0	120	220	220	220	220
47.7	110	395	475	475	475
43.4	100	415	565	670	715
39.0	90	420	575	690	805
34.7	80	425	575	705	820
30.3	70	430	580	710	830
26.0	60	435	585	715	835
Suction Lift		25'	20'	15'	10'

PUMP SPECIFICATIONS

Size: 4" x 4" (102 mm x 102 mm) Flanged.
Casing: Gray Iron No. 30. Maximum Operating Pressure 87 psi (600 kPa).*
Semi-Open Type, Two Vane Impeller: Ductile Iron No. 65-45-12.
 Handles 3" (76,2 mm) Diameter Spherical Solids.
Impeller Shaft: Stainless Steel No.17-4.
Replaceable Wear Plate: Carbon Steel No. 1015.
Intermediate Bracket: Gray Iron No. 30.
Seal Plate: Gray Iron No. 30.
Seal: Cartridge Type, Mechanical, Oil-Lubricated, Double Floating, Self-Aligning. Silicon Carbide Rotating and Stationary Faces. Stainless Steel No. 316 Stationary Seat. Fluorocarbon Elastomers (DuPont Viton® or Equivalent). Stainless Steel No. 18-8 Cage and Spring. Maximum Temperature of Liquid Pumped 160°F (71 °C).*
Shaft Sleeve: Alloy Steel No. 4130.
Priming Chamber: Gray Iron No. 30 Housing w/Stainless Steel Float and Linkage.
Discharge Check Valve: 125# Ductile Iron Housing w/Buna-N Flapper.
Radial Bearing: Open Single Row Ball.
Thrust Bearing: Open Double Row Ball.
Bearing and Seal Cavity Lubrication: SAE No. 30 Non-Detergent Oil.
Flanges: Gray Iron No. 30.
Gaskets: Buna-N, Cork, and Vegetable Fiber.
O-Rings: Fluorocarbon (DuPont Viton® or Equivalent).
Hardware: Standard Plated Steel.
Bearing and Seal Cavity Oil Level Sight Gauges.
**Consult Factory for Applications Exceeding Maximum Pressure and/or Temperature Indicated.*
Standard Equipment: Soundproof (EPA Average 68 dBA at 23 feet [7 meters] Under Load) Lightweight Aluminum Enclosure - Removable for Maintenance of Pump or Engine - w/Padlockable Door Panels. Combination Skid Base w/Fuel Tank. Strainer. Belt-Driven Air Compressor. Single Ball Type Float Switch.**
***50 Ft. (15 m) Standard Length; Dual Switches and Alternate Cable Lengths Available From the Factory.*
Optional Equipment: Battery. High Speed (55 MPH/89 KM/H) Wheel Kit with ST225/75R14 Pneumatic Tires. Over-the-Road Trailer (Meets D.O.T. and Transport Canada Requirements) Available w/Either Electric or Hydraulic Surge Brakes, Running Lights, Two Trailer Jack Stands and Safety Chains. EPS w/Submersible Transducer Liquid Level Sensor (50 Ft. [15 M] Cable Standard, Alternate Lengths Available).



SHOWN WITH OPTIONAL WHEEL KIT

WARNING!
Do not use in explosive atmosphere or for pumping volatile flammable liquids.

ENGINE SPECIFICATIONS

Model: John Deere 4024T "Power Tech".
Type: Four Cylinder, Four Cycle, Liquid Cooled Diesel Engine.
Displacement: 149 Cu. In. (2,4 Liters).
Governor: Mechanical.
Lubrication: Forced Circulation.
Air Cleaner: Dry Type.
Oil Reservoir: 8.5 U.S. Qts. (8 Liters) Dry; 7.6 U.S. Qts. (7.2 Liters) Refill.
Fuel Tank: 42 U.S. Gallons (159 Liters).
Full Load Operating Time: 23.2 Hours.
Starter: 12 Volt Electric.
Standard Features: Low Oil Pressure and High Coolant Temperature Safety Shut Down Switches. Autostart Instrument Panel Includes: Tachometer, Voltmeter, Hourmeter, Coolant Temperature Gauge, Oil Pressure Gauge, Manual/Stop/Auto Key Switch, 10 Amp Pushbutton Circuit Breaker, Startup Warning Delay. Muffler w/Guard and Weather Cap. Throttle Control.

JOHN DEERE PUBLISHED PERFORMANCE:
Maximum Continuous B.H.P. 52 (38.8 kW) @ 2800 RPM



THE GORMAN-RUPP COMPANY • MANSFIELD, OHIO

GORMAN-RUPP OF CANADA LIMITED • ST. THOMAS, ONTARIO, CANADA

www.grpumps.com

Specifications Subject to Change Without Notice

Printed in U.S.A.

Specification Data

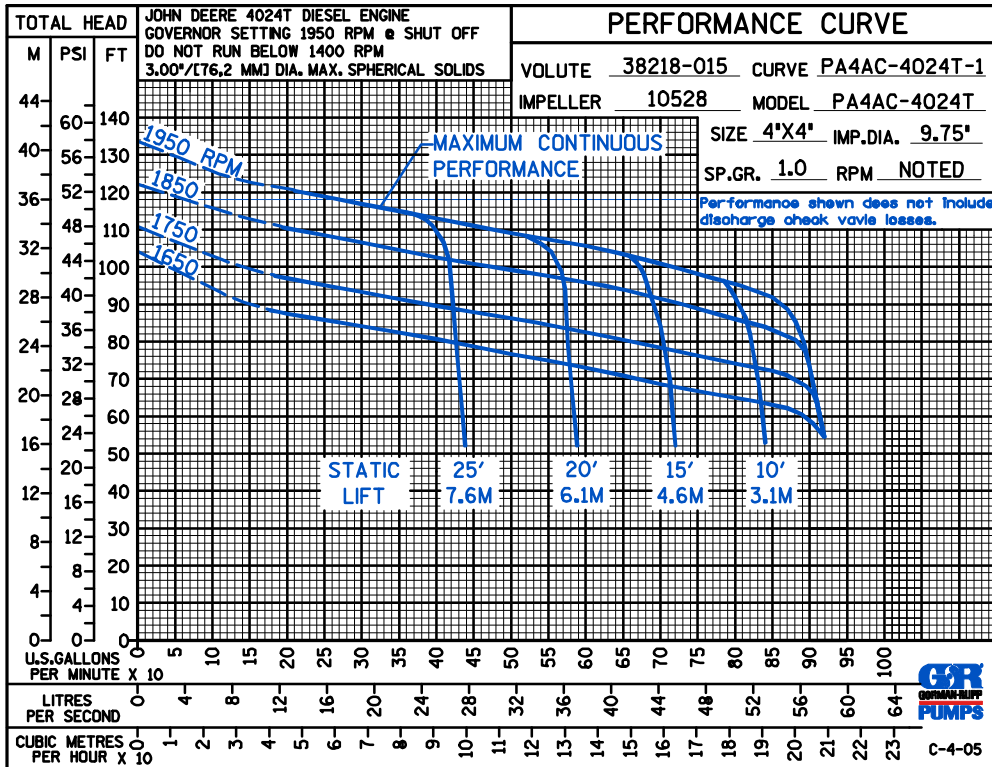
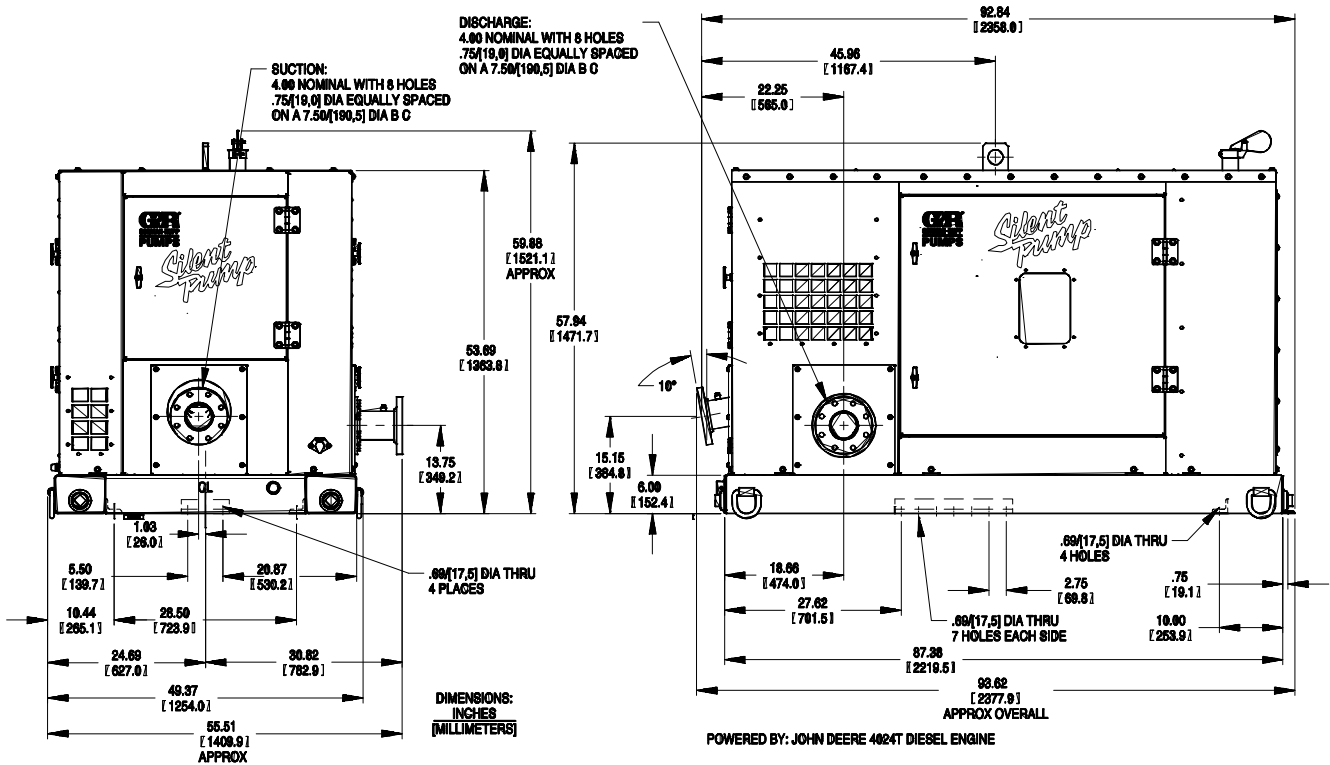
APPROXIMATE
DIMENSIONS and WEIGHTS

SKID BASE

2-WHEEL

NET WEIGHT: 2495 LBS. (1132 KG.) 3150 LBS. (1429 KG.)
SHIPPING WEIGHT: 2795 LBS. (1267 KG.) 3150 LBS. (1429 KG.)
EXPORT CRATE SIZE: 234 CU. FT. (6,6 CU. M.)

SECTION 42, PAGE 316



THE GORMAN-RUPP COMPANY • MANSFIELD, OHIO

GORMAN-RUPP OF CANADA LIMITED • ST. THOMAS, ONTARIO, CANADA

Specifications Subject to Change Without Notice

Printed in U.S.A.