

Priming Assisted Centrifugal Pump w/Autostart



Model PAH10A60C-C18

Size 12" x 10"



Total Head		Capacity of Pump in U.S. Gallons per Minute (GPM) at Continuous Performance				
P.S.I.	Feet					
242.8	560	N/A	1500	◆	◆	◆
238.4	550	N/A	2400	◆	◆	◆
216.8	500	N/A	3075	◆	◆	◆
195.1	450	N/A	3285	◆	◆	◆
173.4	400	2410	3390	4250	4250	◆
151.7	350	2420	3400	4675	5590	◆
130.0	300	2425	3400	4690	5670	4000
108.4	250	2430	3400	4700	5695	5950
86.7	200	2450	3400	4725	5700	6100
65.0	150	2460	3400	4750	5700	6200
43.4	100	2475	3400	4780	5720	6300
21.7	50	2495	3400	4795	5740	6400
Suction Lift		±25'	20'	±15'	±10'	±6'

- ‡ Suction Lift Based On 1600 RPM Engine Speed.
- ‡‡ Suction Lift Based On 1400 RPM Engine Speed.
- ◆ Flow Limitation due to Available Engine Horsepower.

PUMP SPECIFICATIONS

Size: 12" x 10" (305 mm x 254 mm) Flanged.
Casing: Ductile Iron 65-45-12.
 Maximum Casing Pressure 375 psi (2586 kPa).*
 Maximum Operating Pressure 250 psi (1723 kPa) at Temperatures up to 100° F (37° C) Based on System Component Limitations.*
Enclosed Type, Four Vane Impeller: Ductile Iron 80-55-06.
 Handles 2" (50,8 mm) Diameter Spherical Solids.
Impeller Shaft: Alloy Steel 4150M.
Replaceable Wear Ring: Ductile Iron 65-45-12.
Bearing Pedestal: Gray Iron 30.
Seal Plate: Ductile Iron 65-45-12.
Seal: Mechanical, Oil-Lubricated. Silicon Carbide Rotating Face and Stationary Seat. Fluorocarbon Elastomers (DuPont Viton® or Equivalent). Stainless Steel 316 Cage and Stainless Steel 18-8 Spring. Maximum Temperature of Liquid Pumped, 160°F (71°C).*
Shaft Sleeve: Stainless Steel 303/304.
Priming Chamber: Gray Iron 30 Housing w/Stainless Steel Float and Linkage.
Discharge Check Valve: Ductile Iron Housing w/Buna-N Flapper.
Radial Bearing: Open Single Ball.
Thrust Bearing: Open Double Ball.
Bearing and Seal Cavity Lubrication: SAE 30 Non-Detergent Oil.
Suction Spool: Gray Iron 30.
Gaskets: Resistant Synthetic Rubber, Vegetable Fiber w/Compressed Synthetic Fibers.
O-Rings: Buna-N.
Hardware: Standard Plated Steel.
Bearing and Seal Cavity Oil Level Sight Gauges.
 *Consult Factory for Applications Exceeding Maximum Pressure and/or Temperature Indicated.
Standard Equipment: Belt-Driven Air Compressor. Hoisting Bail. Combination Skid Base w/Fuel Tank. Strainer. **Single Ball Type Float Switch.** **
 **50 Ft. (15 m) Standard Length; Dual Switches and Alternate Cable Lengths Available From the Factory.
Optional Equipment: Batteries (2 Req'd). Heated Priming Chamber Kit. G-R Hard Iron Impeller. NPT Threaded Flanges. Over-the-Road Trailer (Meets D.O.T. and Transport Canada Requirements) Available w/ Either Electric or Hydraulic Surge Brakes, Running Lights, Trailer Jack Stands and Safety Chains/Cables. Automatic Air Release Valve. Suction Vacuum and Discharge Pressure Gauge Kit. **Full Feature Control Panel** For Use w/ Submersible Transducer Liquid Level Sensor (50 Ft. [15 M] Cable Standard, Alternate Lengths Available).



WARNING!

Do not use in explosive atmosphere or for pumping volatile flammable liquids.

ENGINE SPECIFICATIONS

Model: Caterpillar C18 ACERT™.
EPA Tier: Interim Tier 4.
Type: Six Cylinder, Turbocharged AfterCooled, Liquid Cooled Diesel Engine.
Displacement: 1104.5 Cu. In. (18,1 liters).
Lubrication: Forced Circulation.
Air Cleaner: Dry Type.
Fuel Tank: 240 U.S. Gals. (908 liters).
Full Load Operating Time: 6.9 Hrs.
Starter: 12V Electric.
Standard Features: Muffler w/Weather Cap.
Optional: Electronic Fuel Level Sensor.
Engine Control Features: Padlockable Box with Throttle Control, Tachometer, Coolant Temperature, Oil Pressure, Voltage and Overstart Indicators/Shut-downs. Manual/Stop/Auto Keyswitch. Audible Startup Warning Delay. Fuel Level Display/Alarm/Shutdown (For Use With Optional Fuel Level Sensor).

CATERPILLAR PUBLISHED PERFORMANCE:

Maximum Gross Industrial BHP (Intermittent)
755 (563 kW) @ 1800 RPM



GORMAN-RUPP PUMPS

www.grpumps.com

Specifications Subject to Change Without Notice

Printed in U.S.A.

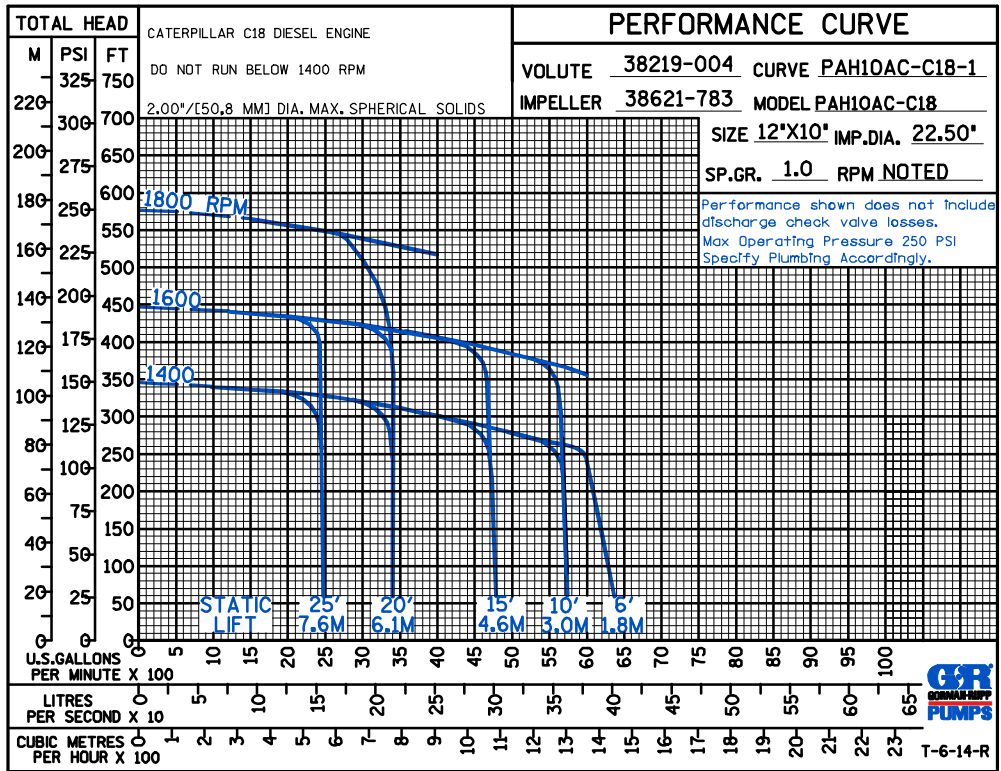
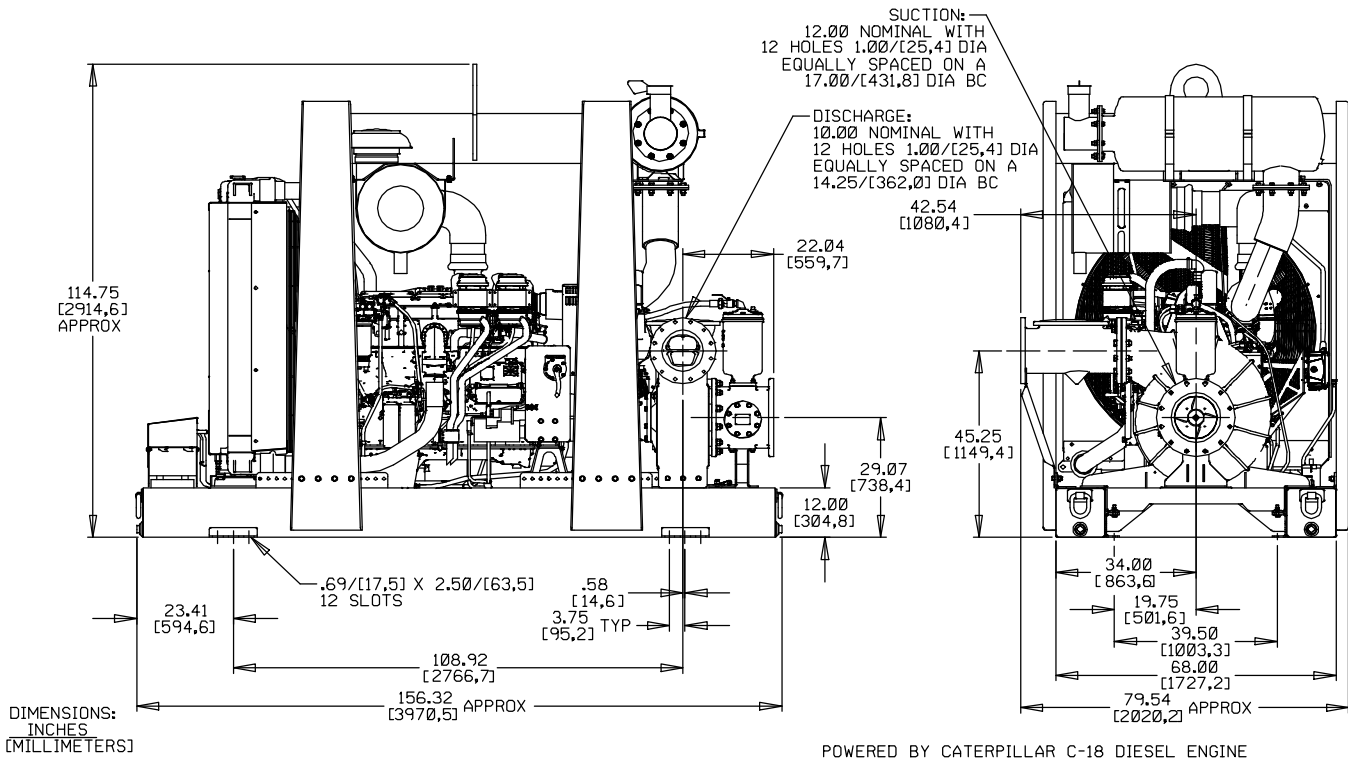
Specification Data

SECTION 43, PAGE 510

APPROXIMATE
DIMENSIONS and
WEIGHTS

NET WEIGHT:
SHIPPING WEIGHT:
EXPORT CRATE SIZE:

12600 LBS. (5715,2 KG.)
13600 LBS. (6168,9 KG.)
970 CU. FT. (27,5 CU. M.)



GORMAN-RUPP PUMPS

www.grpumps.com

Specifications Subject to Change Without Notice

Printed in U.S.A.