

ACDEU

Diesel Engine Driven/Sound Attenuated



**Priming Assisted Centrifugal Environmental
Silent Pump w/Autostart
Model PA6C60-4045T-ESP
Size 8" x 6"**



Total Head		Capacity of Pump in U.S. Gallons per Minute (GPM) at Continuous Performance			
P.S.I.	Feet				
75.9	175	750	750	750	750
65.0	150	1300	1300	1300	1300
54.2	125	1625	1775	1775	1775
43.4	100	1710	1975	2175	2175
32.5	75	1750	2050	2325	2400
21.7	50	1800	2075	2380	2575
10.8	25	1840	2120	2425	2675
Suction Lift		23'	20'	15'	10'



PUMP SPECIFICATIONS

Size: 8" x 6" (203 mm x 152 mm) Flanged.
Casing: Ductile Iron No. 65-45-12. Maximum Operating Pressure 127 psi (876 kPa).*
Open Type, Two Vane Impeller: Ductile Iron No. 65-45-12. Handles 3" (76,2 mm) Diameter Spherical Solids.
Impeller Shaft: Stainless Steel No. 17-4 PH.
Replaceable Wear Plate: Ductile Iron No. 80-60-03.
Removeable Cleanout Cover Plate: Carbon Steel Plate.
Intermediate: Gray Iron No. 30.
Seal Plate: Gray Iron No. 30.
Seal: Mechanical, Oil-Lubricated. Silicon Carbide Rotating and Stationary Faces. Stainless Steel No. 316 Stationary Seat. Fluorocarbon Elastomers (DuPont Viton® or Equivalent). Stainless Steel No. 18-8 Cage and Spring. Maximum Temperature of Liquid Pumped, 160°F (71°C).*
Shaft Sleeve: Stainless Steel No. 17-4 PH.
Priming Chamber: Gray Iron No. 30.
Discharge Check Valve: Gray Iron No. 30 Housing w/Buna-N Flapper.
Radial and Thrust Bearings: Open Double Ball.
Bearing and Seal Cavity Lubrication: SAE No. 30 Non-Detergent Oil.
Flanges: Gray Iron No. 30.
Gaskets: Resistant Synthetic Rubber, Cork, PTFE, Vegetable Fiber, and Compressed Synthetic Fibers.
Hardware: Standard Plated Steel.
Bearing and Seal Cavity Oil Level Sight Gauges.
**Consult Factory for Applications Exceeding Maximum Pressure and/or Temperature Indicated.*
Standard Equipment: Soundproof (EPA Average 71 dBA at 23 feet [7 meters] Under Load per CPB Standards) Lightweight Aluminum Enclosure - Removable for Maintenance of Pump or Engine - w/Padlockable Door Panels. Spill Containment Base w/Integral Drains and Fork Lift Pockets. Gear-Driven Air Compressor. Strainer. Single Ball Type Float Switch.**
***50 Ft. (15 m) Standard Length; Dual Switches and Alternate Cable Lengths Available From the Factory.*
Optional Equipment: Battery. Suction Vacuum and Discharge Pressure Gauge Kit. Over-the-Road Trailer (Meets D.O.T. and Transport Canada Requirements) Available w/Either Electric or Hydraulic Surge Brakes, Running Lights, Two Trailer Jack Stands and Safety Chains. EPS w/Submersible Transducer Liquid Level Sensor (50 Ft [15 M] Cable Standard, Alternate Lengths Available).

WARNING!
Do not use in explosive atmosphere or for pumping volatile flammable liquids.

ENGINE SPECIFICATIONS

Model: John Deere 4045T "Power Tech".
Type: Four Cylinder, Four Cycle, Turbocharged, Liquid Cooled Diesel Engine.
Displacement: 276 Cu. In. (4,5 liters).
Governor: Mechanical.
Lubrication: Forced Circulation.
Air Cleaner: Dry Type.
Oil Reservoir: 9 U.S. Qts. (8,5 liters) Dry; 8 U.S. Qts. (7,6 liters) Refill.
Fuel Tank: 84 U.S. Gals. (318 liters).
Full Load Operating Time: 20.7 Hrs.
Starter: 12V Electric.
Standard Features: Low Oil Pressure and High Coolant Temperature Safety Shut Down Switches. Autostart Instrument Panel Includes: Tachometer, Voltmeter, Hourmeter, Coolant Temperature Gauge, Oil Pressure Gauge, Manual/Stop/Auto Key Switch, 10 Amp Pushbutton Circuit Breaker, Audible Startup Warning Delay. Muffler w/Guard and Weather Cap. Throttle Control.

JOHN DEERE PUBLISHED PERFORMANCE:
 Maximum Continuous BHP 103 (77 kW) @ 2500 RPM
 Maximum Dynamic BHP 115 (86 kW) @ 2500 RPM



THE GORMAN-RUPP COMPANY • MANSFIELD, OHIO
 GORMAN-RUPP OF CANADA LIMITED • ST. THOMAS, ONTARIO, CANADA

www.grpumps.com

Specifications Subject to Change Without Notice

Printed in U.S.A.

Specification Data

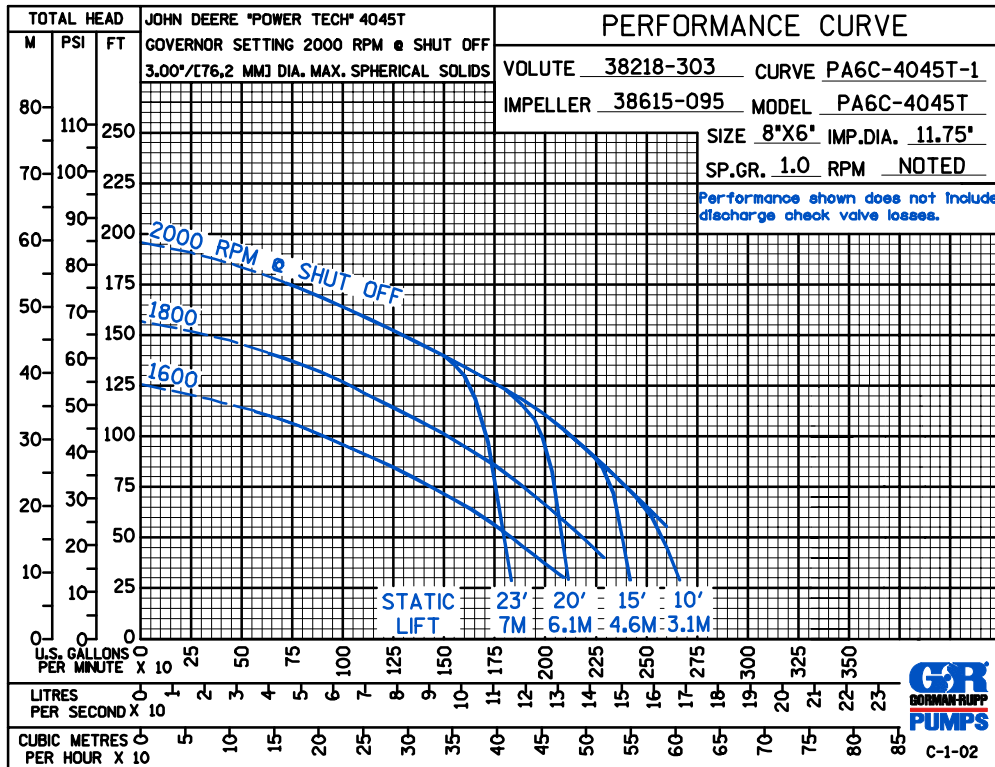
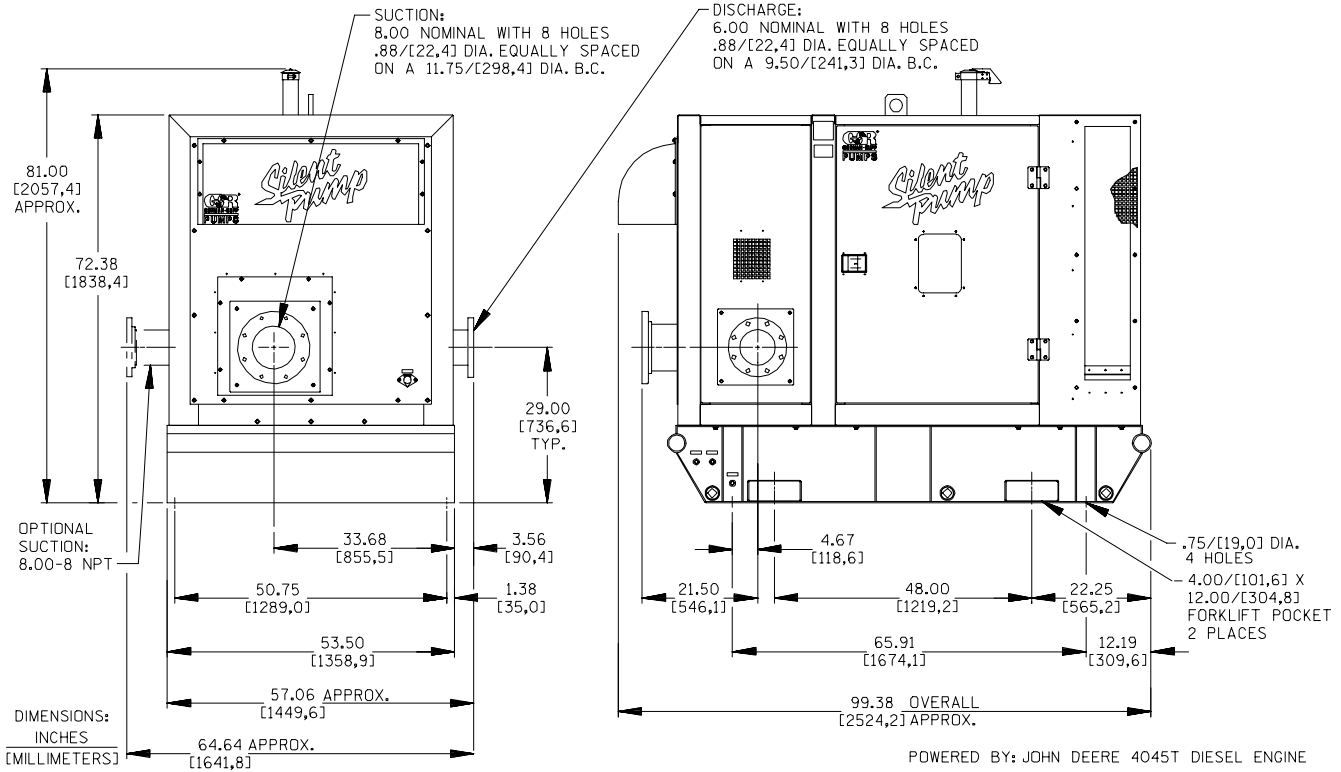
SECTION 42, PAGE 1135

APPROXIMATE
DIMENSIONS and
WEIGHTS

NET WEIGHT:
SHIPPING WEIGHT:
EXPORT CRATE SIZE:

SKID BASE
4430 LBS. (2009 KG.)
4660 LBS. (2114 KG.)
320 CU. FT. (9,1 CU. M.)

HIGHWAY TRAILER
6105 LBS. (2769 KG.)
6105 LBS. (2769 KG.)



THE GORMAN-RUPP COMPANY • MANSFIELD, OHIO

GORMAN-RUPP OF CANADA LIMITED • ST. THOMAS, ONTARIO, CANADA

Specifications Subject to Change Without Notice

Printed in U.S.A.