

A C D E U

# Priming Assisted Centrifugal Pump

Electric Motor Driven

## Model PA12A60-B-E125 3P

Size 12" x 12"



Total Head		Capacity of Pump in U.S. Gallons per Minute (GPM) at Continuous Performance			
P.S.I.	Feet				
38.1	88	2100	2100	2100	2100
34.7	80	2800	3420	3500	3500
30.3	70	3050	4150	4500	4500
26.0	60	3130	4300	5030	5350
21.7	50	3200	4350	5150	5720
17.4	40	3250	4400	5200	5820
13.0	30	3300	4450	5225	5860
<b>Suction Lift</b>		<b>25'</b>	<b>20'</b>	<b>15'</b>	<b>10'</b>



### PUMP SPECIFICATIONS

- Size:** 12" x 12" (305 mm x 305 mm) Flanges.
- Casing:** Gray Iron No. 30. Maximum Operating Pressure 62 psi (427 kPa).\*
- Enclosed Type, Three Vane Impeller:** Ductile Iron No. 60-40-18. Handles 3" (76 mm) Diameter Spherical Solids.
- Impeller Shaft:** Stainless Steel No. 17-4 PH.
- Replaceable Wear Rings:** Impeller - Ductile Iron No. 80-60-03. Suction Head - Bronze No. C83600.
- Seal Plate:** Gray Iron No. 30.
- Bearing Housing:** Gray Iron No. 30.
- Seal:** Mechanical, Oil-Lubricated, Double Floating, Self-Aligning. Silicon Carbide Rotating and Stationary Faces. Stainless Steel No. 316 Stationary Seat. Fluorocarbon (DuPont Viton® or Equivalent) and Buna-N Elastomers. Stainless Steel No. 18-8 Cage and Spring. Maximum Temperature of Liquid Pumped 160°F (71°C).\*
- Shaft Sleeve:** Stainless Steel No. 304.
- Priming Chamber:** Gray Iron No. 30.
- Discharge Check Valve:** Gray Iron No. 30 Housing; Buna-N Flapper.
- Radial Bearing:** Single Row Roller.
- Thrust Bearing:** Open Double Ball.
- Bearing and Seal Cavity Lubrication:** SAE No. 30 Non-Detergent Oil.
- Flanges:** Gray Iron No. 30.
- Gaskets:** Resistant Synthetic Rubber and Vegetable Fiber.
- O-Rings:** Buna-N.
- Hardware:** Standard Plated Steel.
- Bearing and Seal Cavity Oil Level Sight Gauges.**
- Standard Equipment:** Belt-Driven Air Compressor. Hoisting Bail. Skid Base. Strainer. Single Level Actuated (Microswitch) Type Liquid Level Control System with 50 Ft. (15.2 M) of Cable. Double Float System and Alternate Cable Lengths Available; Consult the Factory.
- Optional Equipment:** Variable Frequency Controller.



### MOTOR SPECIFICATIONS ‡

- Type:** Totally Enclosed Fan Cooled.
- Frame Size:** 445T.
- Power:** 125 H.P. (93 kW).
- Voltage/Phase:** 460/3.
- Hz:** 60.
- S.F.** 1.15.
- Speed:** 1200 Nominal.
- Full Load Amps:** 155.
- Locked Rotor kVA Code:** G.
- Bearings:** Ball Type.

### CONTROL SPECIFICATIONS

NEMA Type 3R Intrinsically Safe Rain and Sleet (Ice) Resistant Enclosure. Carbon Steel with ANSI 61 Powder Coat. Manual ON/OFF Control with Across-The-Line Starter. 3 Pole Instantaneous Trip 250 Amp Circuit Breaker Type HMCP. 8 Second Startup Warning Delay

\*Consult Factory for Applications Exceeding Maximum Pressure and/or Temperature Indicated.

‡ Standard Specifications Shown. Alternate Motors Available - Consult Factory.



THE GORMAN-RUPP COMPANY • MANSFIELD, OHIO

www.gormanrupp.com

GORMAN-RUPP OF CANADA LIMITED • ST. THOMAS, ONTARIO, CANADA

Specifications Subject to Change Without Notice

Printed in U.S.A.

**Specification Data**

**SECTION 42, PAGE 1590**

APPROXIMATE  
DIMENSIONS and  
WEIGHTS

**NET WEIGHT:**

**6515 LBS. (2955 KG.)**

**SHIPPING WEIGHT:**

**6865 LBS. (2978 KG.)**

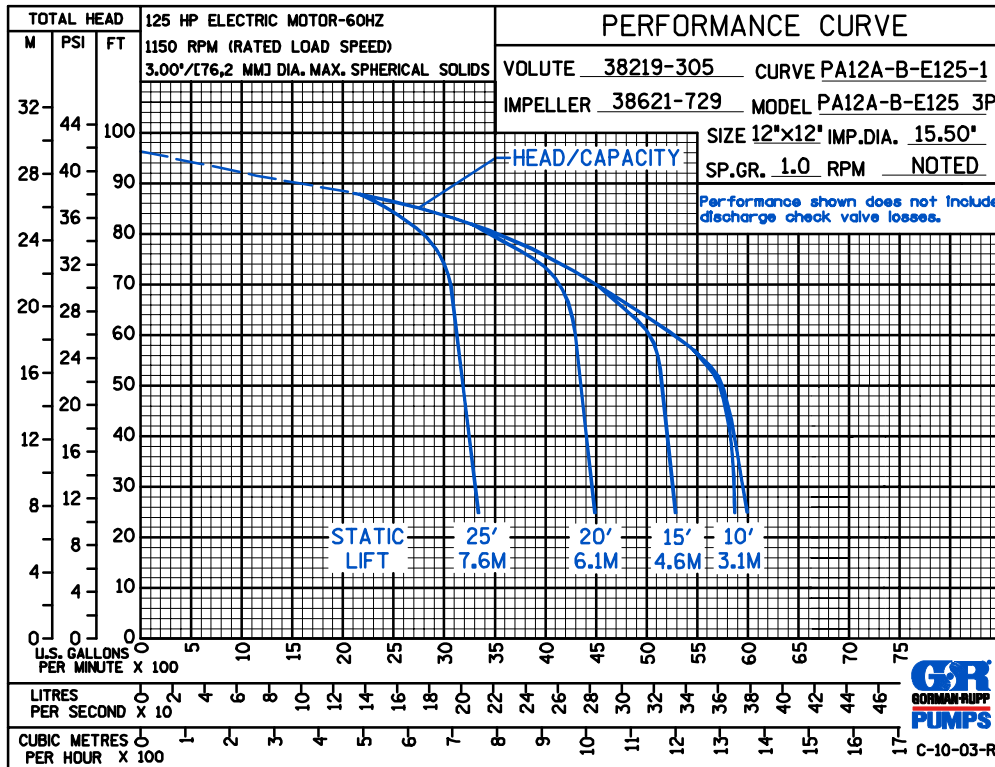
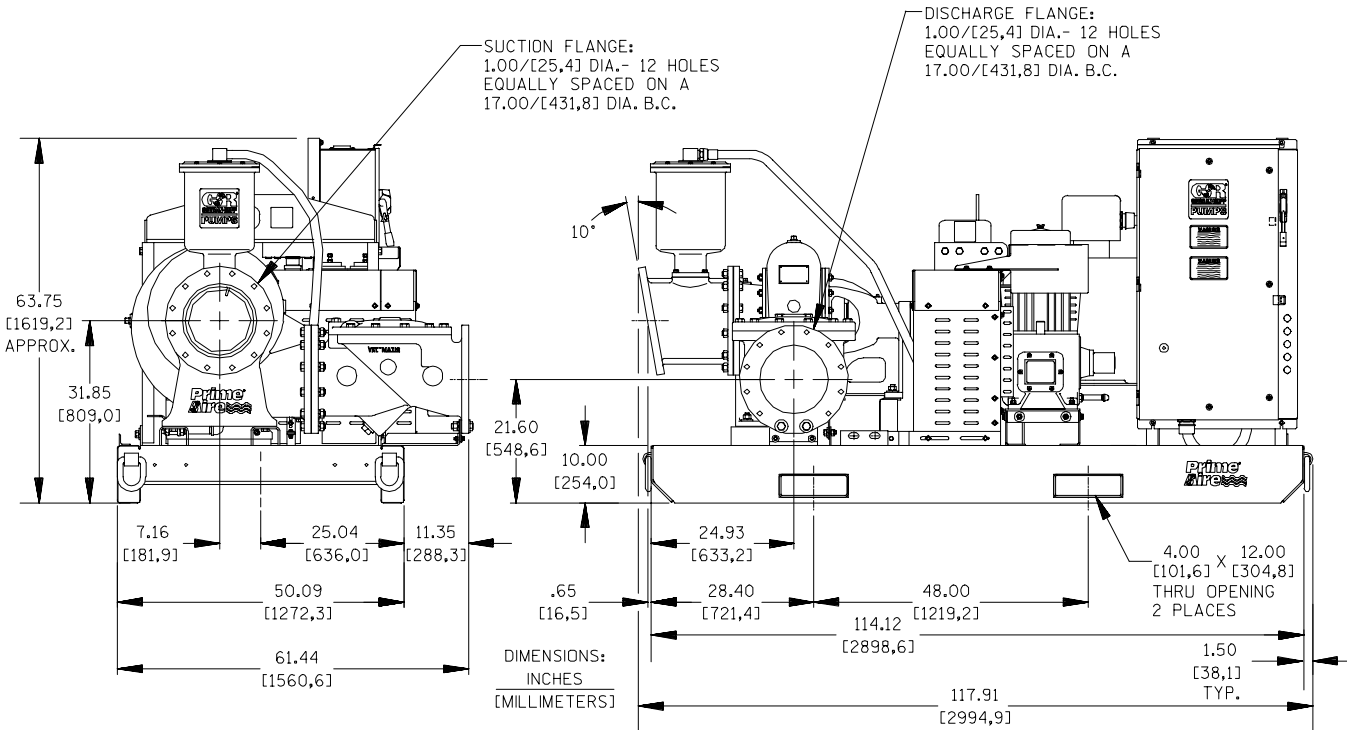
**EXPORT CRATE SIZE: 312 CU. FT. (8,8 CU. M.)**

**SKID BASE**

**2-WHEEL**

**7590 LBS. (3443 KG.)**

**7590 LBS. (3443 KG.)**



**THE GORMAN-RUPP COMPANY • MANSFIELD, OHIO**

GORMAN-RUPP OF CANADA LIMITED • ST. THOMAS, ONTARIO, CANADA

Specifications Subject to Change Without Notice

Printed in U.S.A.