

ACDEU

# Sound Attenuated Environmental Silent Pump Priming Assisted Centrifugal Pump



Diesel Engine Driven

Model PA10A60-6068T-ESP

Size 10" x 10"



Total Head		Capacity of Pump in U.S. Gallons per Minute (GPM) at Continuous Performance				
P.S.I.	Feet					
60.7	140	780	780	780	780	780
52.0	120	1590	1840	1920	1920	1920
43.4	100	1840	2400	2820	3020	3020
34.7	80	1920	2520	3020	3500	3620
26.0	60	2020	2580	3100	3630	3820
17.3	40	2100	2640	3180	3720	3920
8.7	20	2180	2700	3260	3820	4030
<b>Suction Lift</b>		<b>24'</b>	<b>20'</b>	<b>15'</b>	<b>10'</b>	<b>5'</b>



### PUMP SPECIFICATIONS

- Size:** 10" x 10" (254 mm x 254 mm) Flanged.
- Casing:** Gray Iron No. 30. Maximum Operating Pressure 98 psi (676 kPa).\*
- Open Type, Two Vane Impeller:** Ductile Iron No. 65-45-12. Handles 3.25" (82.6 mm) Diameter Spherical Solids.
- Impeller Shaft:** Stainless Steel No. 17-4 PH.
- Replaceable Front Wear Plate:** Ductile Iron No. 80-60-03.
- Bearing Housing:** Gray Iron No. 30.
- Seal Plate:** Gray Iron No. 30.
- Seal:** Mechanical, Oil-Lubricated, Double Floating, Self-Aligning. Silicon Carbide Rotating and Stationary Faces. Stainless Steel No. 316 Stationary Seat. Fluorocarbon Elastomers (DuPont Viton® or Equivalent). Stainless Steel No. 18-8 Cage and Spring. Maximum Temperature of Liquid Pumped, 160°F (71°C).\*
- Shaft Sleeve:** Alloy Steel No. 4130.
- Priming Chamber:** Gray Iron No. 30.
- Discharge Check Valve:** Gray Iron No. 30 Housing w/Buna-N Flapper.
- Radial Bearing:** Open Double Ball.
- Thrust Bearing:** Open Single Ball.
- Bearing and Seal Cavity Lubrication:** SAE No. 30 Non-Detergent Oil.
- Flanges:** 125# Gray Iron No. 30.
- Suction Head:** Gray Iron No. 30.
- Gaskets:** Resistant Synthetic Rubber, PTFE, Cork, Vegetable Fiber, and Compressed Synthetic Fibers.
- O-Rings:** Buna-N.
- Hardware:** Standard Plated Steel.
- Seal and Bearing Cavity Oil Level Sight Gauges.**
- \*Consult Factory for Applications Exceeding Maximum Pressure and/or Temperature Indicated.*
- Standard Equipment:** Soundproof (EPA Average 67 dBA at 23 feet [7 meters] Under Load). Lightweight Aluminum Enclosure - Removable for Maintenance of Pump or Engine - w/Padlockable Door Panels. Spill Containment Base w/Integral Drains and Fork Lift Pockets. Strainer. Single Ball Type Float Switch.\*\*
- \*\*50 Ft. (15 m) Standard Length; Dual Switches and Alternate Cable Lengths Available From the Factory.*
- Optional Equipment:** Battery. G-R Hard Iron Impeller, Seal Plate, and Wear Plate. EPS w/Submersible Transducer Liquid Level Sensor (50 Ft. [15.2 M] Cable Standard, Alternate Lengths Available).

**WARNING!**

Do not use in explosive atmosphere or for pumping volatile flammable liquids.

### ENGINE SPECIFICATIONS

- Model:** John Deere 6068T "Power Tech".
- Type:** Six Cylinder, Four Cycle, Turbo-Charged, Liquid Cooled Diesel Engine.
- Displacement:** 414 Cu. In. (6,8 liters).
- Governor:** Mechanical.
- Lubrication:** Forced Circulation.
- Air Cleaner:** Dry Type.
- Oil Reservoir:** 20 U.S. Qts. (19 liters) Dry; 19 U.S. Qts. (18 liters) Refill.
- Fuel Tank:** 165 U.S. Gals. (625 liters).
- Full Load Operating Time:** 28 Hrs.
- Starter:** 12V Electric.
- Standard Features:** Low Oil Pressure and High Coolant Temperature Safety Shut Down Switches. Instrument Panel Includes: Tachometer, Hourmeter, Coolant Temperature Gauge, Oil Pressure Gauge, Vernier Throttle Control, On/Off Key Switch, and Ammeter. Muffler w/Guard and Weather Cap.

**JOHN DEERE PUBLISHED PERFORMANCE:**  
 Maximum Continuous BHP 153 (114 kW) @ 2500 RPM  
 Maximum Dynamic BHP 170 (127 kW) @ 2500 RPM



THE GORMAN-RUPP COMPANY • MANSFIELD, OHIO

GORMAN-RUPP OF CANADA LIMITED • ST. THOMAS, ONTARIO, CANADA

www.grpumps.com

Specifications Subject to Change Without Notice

Printed in U.S.A.

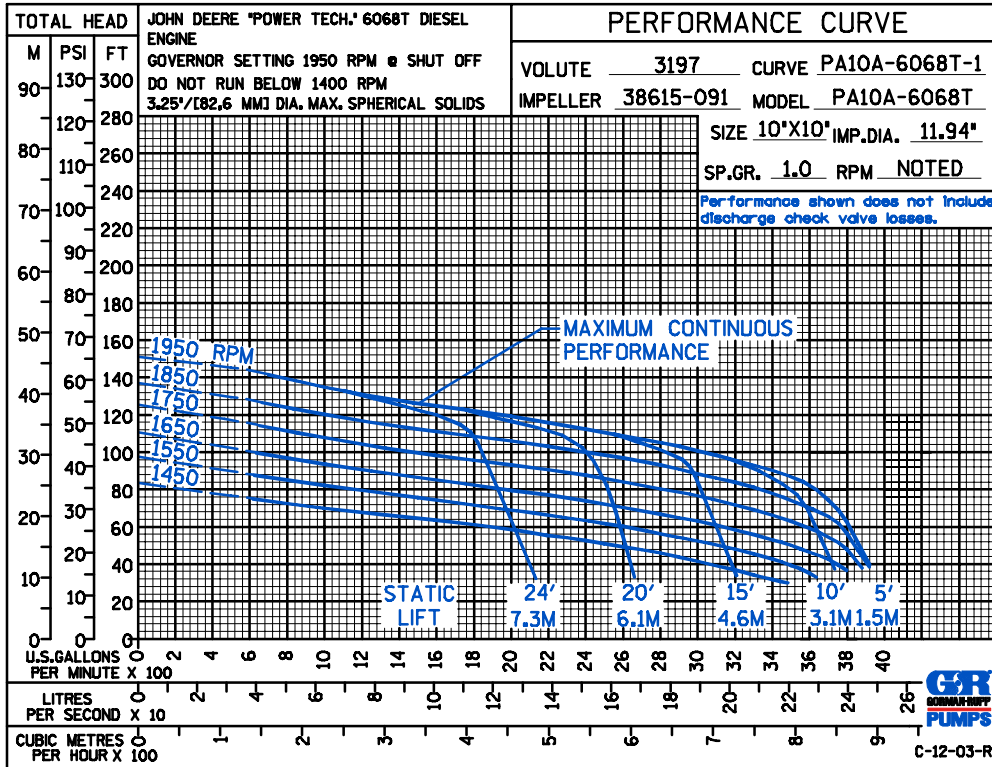
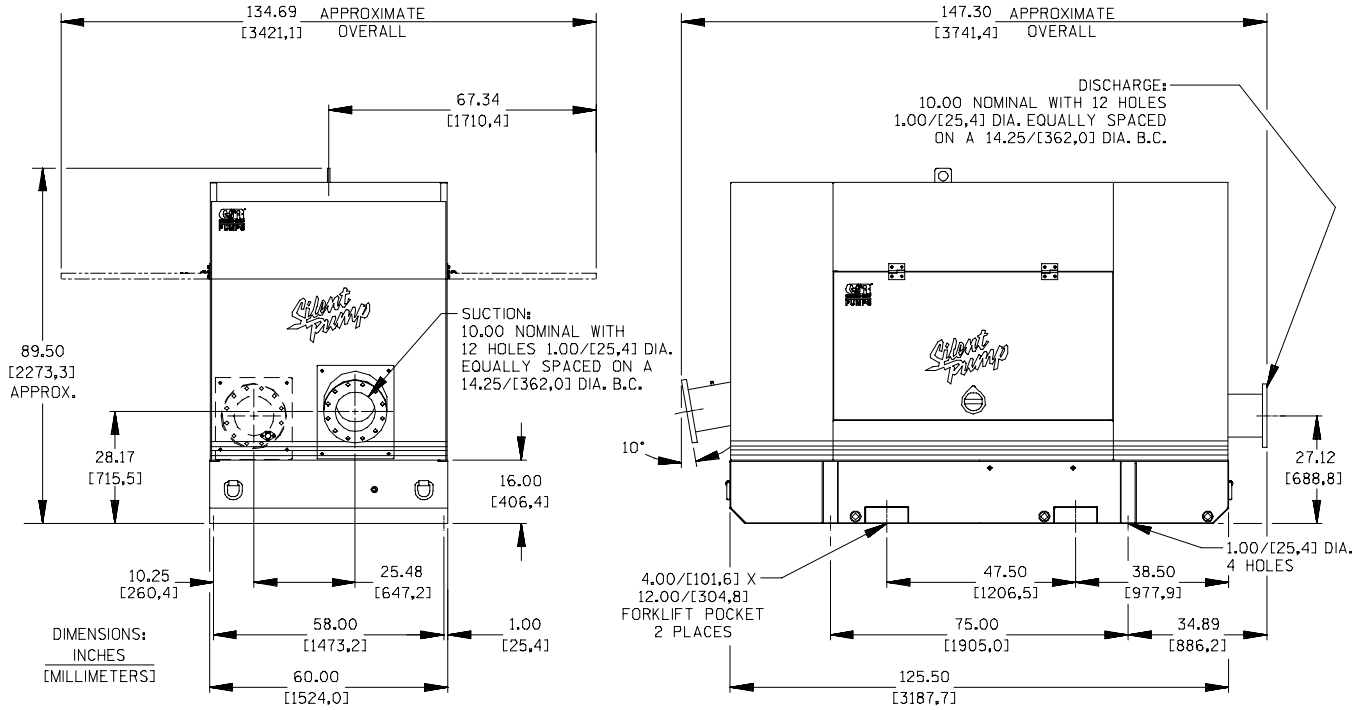
**Specification Data**

SECTION 42, PAGE 1501

APPROXIMATE DIMENSIONS and WEIGHTS

**SKID BASE**  
**NET WEIGHT: 6700 LBS. (3039 KG.)**  
**SHIPPING WEIGHT: 6700 LBS. (3039 KG.)**  
**EXPORT CRATE SIZE: 525 CU. FT. (14,9 CU. M.)**

POWERED BY: JOHN DEERE 6068T DIESEL ENGINE WITH AUXILIARY DRIVE AIR COMPRESSOR



THE GORMAN-RUPP COMPANY • MANSFIELD, OHIO

GORMAN-RUPP OF CANADA LIMITED • ST. THOMAS, ONTARIO, CANADA

Specifications Subject to Change Without Notice

Printed in U.S.A.